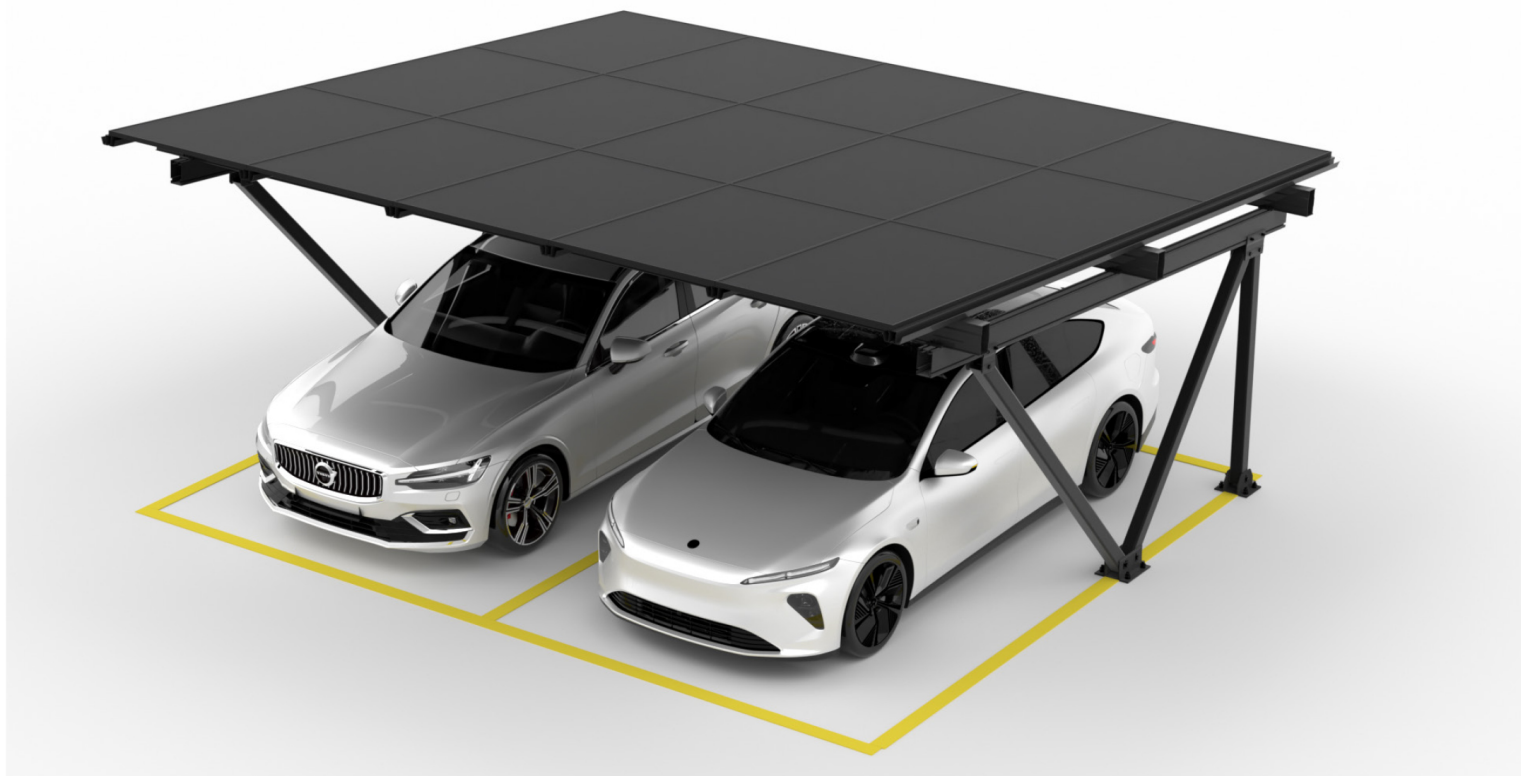


Carport eaZy black

Solar Parking Solution for Residential and Commercial Projects



The eaZy is a solar parking solution providing solar panels support as well as car sheltering for residential and commercial projects. The high quality aluminum components and stainless steel fasteners ensure a robust and reliable system. With the exquisite structure design, the waterproof function is available without using a large amount of EPDM rubbers.

Main Benefits



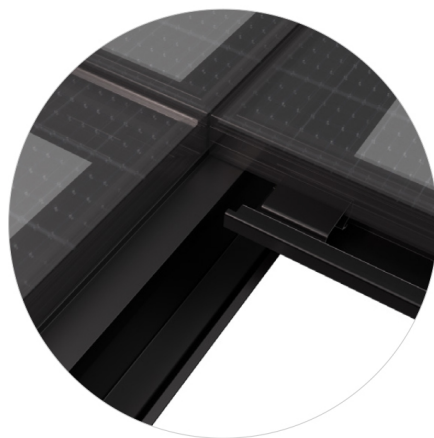
Easy Installation

Thanks to the innovative structural design, the system can be installed with less steps in a short time.



Safety

High safety performance and easily installation due to innovative clamp which can help fasten PV panels from bottom, avoiding the danger of cracking and preventing workers from falling.



Waterproof

With the special water guide rails and gutters install under the gap of PV panels, the eaZy is totally waterproof. Water will flow along the gap into the gutters and water guide rails, finally into the ground.



Technical Details

Module Orientation	3P (module length is around 1800±100 mm)
Module Type	Framed
Foundation	Concrete
Wind Load	Up to 50m/s (3s gust, MRI = 50Y)
Tilt Angle	5° (standard)*
Material	Main Structure: AL6005-T5 Fasteners: SUS 304
Span	5500 mm (standard)*
Standard	ASCE 7-10 EUROCODE 0-9 JISC 8955 AS NZS 1170.2
Mini Ground Clearance	2100mm*
Application	Carport, Backyard Shade, Swimming Pool Shade – Applications are endless
Certification	CE
Warranty	12 years

